



Interactive System Productivity Facility (ISPF)

## ISPF Hidden Treasures and New Features



SHARE 117  
Sessions 9694 & 9695

Peter Van Dyke  
IBM Australia  
SHARE 117, Summer 2011  
pvandyke@au1.ibm.com


© 2011 IBM Corporation

Interactive Program Development Facility (ISPF)



## Hidden Treasures and New Features in ISPF


- Data Set List
  - DSLIST Command
  - Recent Enhancements
- Member List
  - Recent Enhancements
- Edit
  - COMPARE Command
  - Recent Enhancements
- Connect Without GUI
- z/OS UNIX Support
  - Directory List Utility
  - Edit and Browse
  - ASCII Edit
  - UDLIST Command

Interactive Program Development Facility (ISPF)


## Hidden Treasures and New Features in ISPF...

- Multiple Screen Support
  - SWAPBAR
- Display System & User Id
- ISPF in a Web Browser (Using z/OSMF)
- ISPF Client Gateway – ISPF from the Internet
- ISRDDN Utility
- User Command Tables
  - ISPF Table Utility
- ISRDTLCV macro


3
Hidden Treasures/New Features | Sessions 9694 & 9695
© 2011 IBM Corporation

Interactive Program Development Facility (ISPF)


## DSLISL

- **DSLISL** *personal\_list\_name* | *pattern*
  - If a list name exists by that name, a data set list will be built based on the entries in the list
  - If a list name does not exist, the parameter is treated as a pattern
- **APPEND** command from within Data Set List
  - Adds entries to the displayed list
  - specify a personal list name or a pattern
- **REFRESH** command from within Data Set List
  - Refreshes display to original list filter criteria
- **EXCLUDE** command and X line command from within Data Set List
  - Excludes data sets displayed in list
  - Shadow line displayed


4
Hidden Treasures/New Features | Sessions 9694 & 9695
© 2011 IBM Corporation

Interactive Program Development Facility (ISPF)


## New Data Set List Commands - z/OS 1.2

- MEMBER command**
  - allows the partitioned data sets in the list to be searched for a specific member name or pattern
  - Syntax: `Member string [X|EX|NX][RECALL1|RECALL2]`
  - Message field identifies data sets containing the member(s)
- SRCHFOR command**
  - Invokes SuperC to search the listed data sets for strings
  - Syntax: `SRCHFOR [string]`
  - Displays panel used to specifying options for SuperC
  - Message field identifies data sets containing the string
  - SuperC output written to data set (default: `userid.SRCHDSL.LIST`)

5
Hidden Treasures/New Features | Sessions 9694 & 9695
© 2011 IBM Corporation

Interactive Program Development Facility (ISPF)


## Data Set List Enhancements

- Enhanced SORT command (z/OS 1.7)**
  - Provides ability to sort a data set list in ascending or descending order
  - Syntax: `SORT major-field [A|D] [minor-field] [A|D]`
- Display Total Tracks Value (z/OS 1.9)**
  - New **Display Total Tracks** option added to the Data Set List Utility entry panel
  - If selected, an additional header line showing the total tracks used by the data sets is displayed with the **Space** and **Total** views
  - Pop-up window showing data collection progress displayed when calculating total tracks for a list of 50 or more data sets

6
Hidden Treasures/New Features | Sessions 9694 & 9695
© 2011 IBM Corporation

## Data Set List Enhancements. . .

### ■Block Line Commands (z/OS 1.10)

- Allows Data Set List line commands to be entered in blocks
- A block of line commands is marked by entering two forward slash characters (//) at the start and end of the block
- The required line command is entered on the first or last line of the block, immediately following the two forward slash characters
- All line commands, including TSO commands, Clists and REXX execs can be executed as block commands

### ■Include PREFIX in Dsname Level (z/OS 1.11)

- New **Prefix Dsname Level** option added to the Data Set List Utility entry panel
- If selected, ISPF will add the TSO prefix (if the user's TSO profile has PREFIX defined) as the first qualifier if the Dsname Level entered is not enclosed in quotes

## Data Set List Enhancements. . .

### ■Allocate Line Command (z/OS 1.13)

- New **AL** line command can be used to allocate a new data set
- New data set name can be specified with the AL line command
- If AL is entered against a deleted data set and a name is not specified ISPF will use the name of the deleted data set
- When AL is entered against an existing data set the user has the option to:
  - Create the data set using the attributes of the existing data set
  - Specify the attributes of the data set on the Allocate New Data Set panel

## New Member List Commands - z/OS 1.5

### ▪SRCHFOR command

- Invokes SuperC to search the listed members for strings
- Syntax: **SRCHFOR** [*string*]
- Displays panel used to specifying options for SuperC
- PROMPT column identifies members containing the string
- SuperC output written to data set  
(default: *userid.SRCHML.LIST*)

### ▪SORT PROMPT command

- Sorts members with messages in the PROMPT column to the top of the member list
- Use after **SRCHFOR** command to group all members containing *string* at the top of the member list

## Member List Enhancements

### ▪Enhanced **SORT** command (z/OS 1.7)

- Provides ability to sort a data set list in ascending or descending order
- Syntax: **SORT** *major-field* [*A|D*] [*minor-field*] [*A|D*]

### ▪New **FILTER** command (z/OS 1.8)

- Used to display only those members having an attribute matching a specified value
- Syntax: **FILTER** [*field operator value*]  

<i>field</i>	member list column name
<i>operator</i>	EQ, NE, LE, LT, GE, or GT
<i>value</i>	the comparison value
- Member List SRCHFOR command also enhanced to optionally display only those members containing the SRCHFOR string

## Member List Enhancements. . .

### ■ New **I** line command for enhanced member list (z/OS 1.13)

- Used to display panel showing the ISPF statistics for a member
- Introduced to provide a display of extended line count statistics for a member with extended statistics
  - is not restricted to members that have extended line count statistics

## Edit COMPARE Command

- Syntax: **COMPARE** [**member**|**data\_set\_name**]**NEXT**|\* [**X**] [**SYSIN**]
- Uses SuperC APIs to compare to data sets or members
- Changes are highlighted depending on if the change is new to the source (member or data set where COMPARE command was issued), only in the target, or common
- **NEXT** compares next member in hierarchy of ISPF library
- **X** excludes common lines except for a few around differences
- **SYSIN** DD has additional SuperC Process Statements

The diagram illustrates the output of the COMPARE command, showing a comparison between two data sets. The output is color-coded to indicate the type of change:

- only in "target" (NEXT in this case) MD to "make data"**: Indicated by a red arrow pointing to the line "000052 altdescr="CMDE"".
- new in "source"**: Indicated by a red arrow pointing to the line "000054 <cmdact action="SELECT PGM(ISPCCMDE) SUSPEND"".
- common**: Indicated by a red arrow pointing to the line "000055 <:----- COLOR ----->".
- common lines excluded by X parameter**: Indicated by a red arrow pointing to the line "000056 <cmd name=COLOR".

The output also shows a summary of changes and a warning about line counts:

```
VIEW      PDFTDEV.STG.GML(ISPCMDS) - 01.03      Changes are shown
Command ==>                                     Scroll ==> CSR
000052      altdescr="CMDE"
=====
000054      <cmdact action="SELECT PGM(ISPCCMDE) SUSPEND"
000055      <:----- COLOR ----->
000056      <cmd name=COLOR
000057      altdescr="INVOKO GLOBAL COLOR CHANGE UTILITY"
000058      <cmdact action=
-----
000409      altdescr="Turn ISPF/TSO GUI WINDOW ON or OFF"
000410      <cmdact action="SELECT PGM(ISPISM) PARM(TSOGUI,&parm;ZPARM)"
-----
350 Line(s) not Displayed
```

## Edit COMPARE Enhancement (z/OS 1.11)

- The SYSIN keyword on the COMPARE command is enhanced to support a sub-parameter

- User can specify the SuperC process statements data set name as a sub-parameter of the SYSIN keyword

Syntax: **SYSIN(dsn)**

- Alternatively, the user can request the display of a pop-up panel where the SuperC process statements data set name can be entered

Syntax: **SYSIN(/)**

## New Edit Primary Commands - z/OS 1.6

### •HIDE command

- Removes excluded line messages from the Edit/View display
- Line number underscored to indicate "hidden" line(s)
- Syntax: **HIDE X**
- **RESET** primary command has **HIDE** option to allow redisplay of excluded line messages
  - Syntax: **RESET HIDE**

### •COLS command

- Causes a columns line to be displayed at the top of each Edit/View data screen (i.e. stays with the Edit/View display)
- Syntax: **COLS [ON|OFF]**

## Other Edit Enhancements

### ■ UNDO after SAVE (z/OS 1.9)

- Allows reversal of edit changes made prior to SAVE commands during the current edit session
- New KEEP option added to the edit SETUNDO command
  - Syntax:

```

                                +-STORAGE-+
>>---SETUNDO---+-----+-----><
              +-SETU-----+ +-RECOVER- |
                                +-ON-----|
                                +-OFF-----|
                                +-KEEP-----+
  
```


- Where:

**KEEP** Has the same effect as **STORAGE** and also prevents the SAVE command from clearing the UNDO buffers in storage

## Other Edit Enhancements. . .

### ■ Multiple Targets for MOVE/COPY (z/OS 1.10)


- Suffix of K (keep) can now be used with MOVE/COPY destination line commands **A**, **B**, **O** and **OO**
  - Enter **AK**, **BK**, **OK**, or **OOK** line commands to indicate a multiple target MOVE/COPY command
  - Enter 'final' destination line command (**A**, **B**, **O** or **OO**) to initiate the 'multiple target' MOVE/COPY
  - 'Final' destination must be after the line where the **AK**, **BK**, **OK**, or **OOK** command was entered

Interactive Program Development Facility (ISPF)


## Other Edit Enhancements. . .

- New Edit Line Commands for HEX Display (z/OS 1.11)**
  - New edit line commands to display selected lines in hexadecimal format:
    - HX** display a single line in hexadecimal format
    - HXX** display a block of lines in hexadecimal format
  - The **HX** and **HXX** line commands act as a toggle by switching a line's display format between normal and hexadecimal format

17
Hidden Treasures/New Features | Sessions 9694 & 9695
© 2011 IBM Corporation

Interactive Program Development Facility (ISPF)


## Other Edit Enhancements. . .

- Support for User Defined Line Commands (z/OS 1.13)**
  - Support has previously been available by using the unsupported LMAC tool
  - User defined line commands and the edit macros they invoke are defined in an ISPF table
    - The ISPF Table Utility (ISPF option 3.16) is modified to assist with defining the user line command table
  - New line command table input field on the edit and view entry panels
    - When the line command table is specified the line commands defined in the table are able to be used during the edit session
  - The EDIT and VIEW services also allow a line command table to be passed by the caller

18
Hidden Treasures/New Features | Sessions 9694 & 9695
© 2011 IBM Corporation

Interactive Program Development Facility (ISPF)

IBM

## Connect Without GUI

- **SETTINGS**
  - Workstation pulldown (or **GUIINIT**)
    - Workstation connection
    - Without GUI display
  - Allows workstation commands
    - **FILEXFER**
    - Edit on workstation
    - **SELECT WSCMD**

19

Hidden Treasures/New Features | Sessions 9694 & 9695

© 2011 IBM Corporation

Interactive Program Development Facility (ISPF)

IBM

## z/OS UNIX Directory List Utility (z/OS 1.8)

- Available as ISPF option 3.17
- Provides most of the functions supported by the ISHELL utility

20

Hidden Treasures/New Features | Sessions 9694 & 9695

© 2011 IBM Corporation

## z/OS UNIX Directory List Utility. . .

- Horizontal scrolling via the RIGHT and LEFT primary commands
- Column order and size can be customized via Options pull-down

Menu Utilities View Options Help									
z/OS UNIX Directory List								Row 1 to 20 of 25	
Command ==>								Scroll ==> PAGE	
Pathname : /SYSTEM/etc									
Command	Filename	Message	Type	Permission	Audit	Ext	Format	Owner	
	.		Dir	rwxr-xr-x	fff--			IBMUSER	
	..		Dir	rwxr-xr-x	fff--			IBMUSER	
	ntsc		File	rw-r--r--	fff--	--g--		IBMUSER	
	ant.conf		File	rwxrwxrwx	fff--	--g--		IBMUSER	
	bpa		Dir	rwxr-xr-x	fff--			IBMUSER	
	cmx		Dir	rwxr-xr-x	fff--			IBMUSER	
	dce		Dir	rwxr-xr-x	fff--			IBMUSER	
	dfs		Dir	rwxr-xr-x	fff--			IBMUSER	
	inetd.conf		File	rwxrwxrwx	fff--	--g--		IBMUSER	
	inetd.pid		File	rw-r--r--	fff--	--g--		IBMUSER	
	ioepdcf		Syml	rwxrwxrwx	fff--			IBMUSER	
	ldap		Dir	rwxr-xr-x	fff--			IBMUSER	
	licgmt		Dir	rwxr-xr-x	fff--			IBMUSER	
	log		File	rw-rw-rw	fff--	--g--		IBMUSER	
	pkiserv		Dir	rwxr-xr-x	fff--			IBMUSER	
	profile		File	rwxr-xr-x	fff--	--g--		IBMUSER	
	security		Dir	rwxr-xr-x	fff--			IBMUSER	
	skrb		Dir	rwxr-xr-x	fff--			IBMUSER	
	spool		Dir	rwxr-xr-x	fff--			IBMUSER	
	utmps		File	rw-r--r--	fff--	--g--		IBMUSER	
F1=Help	F2=Split	F3=Exit	F4=Expand	F5=Rfind	F7=Up	F8=Down			
F9=Swap	F10=Left	F11=Right	F12=Cancel						

## z/OS UNIX Directory List Utility. . .

- Primary commands available:
  - EDIT** - edit a file in the current directory
  - FIND** - find a string within a filename
  - LEFT** - scroll the directory list columns to the left
  - LOCATE** - locate a directory list entry based on the sort order
  - REFRESH** - redisplay directory list with any changes that have occurred
  - RESET** - redisplay list removing line commands and messages
  - RIGHT** - scroll the directory list columns to the right
  - SAVE** - write the directory list data to a data set
  - SORT** - sort the directory list by the specified fields

Interactive Program Development Facility (ISPF)

IBM

## z/OS UNIX Directory List Utility. . .

- Line commands available:
 

▪ <b>E</b> - edit a file	▪ <b>CO</b> - copy data out
▪ <b>B</b> - browse a file	▪ <b>CI</b> - copy data in
▪ <b>N</b> - create a new file	▪ <b>I</b> - display attributes
▪ <b>L</b> - list a directory	▪ <b>MM</b> - modify mode fields
▪ <b>D</b> - delete a file	▪ <b>MX</b> - modify extended attributes
▪ <b>R</b> - rename a file	▪ <b>X</b> - execute a command
▪ <b>V</b> - view a file (z/OS 1.9)	▪ <b>MO</b> - Modify Owner (z/OS 1.11)
▪ <b>EA</b> - ASCII edit (z/OS 1.9)	▪ <b>MG</b> - Modify Group (z/OS 1.11)
▪ <b>VA</b> - ASCII view (z/OS 1.9)	▪ <b>MF</b> - Modify Format (z/OS 1.11)
▪ <b>RA</b> - REFLIST Add (z/OS 1.10)	▪ <b>UA</b> - User Auditing (z/OS 1.11)
▪ <b>FS</b> - File System (z/OS 1.11)	▪ <b>AA</b> - Auditor Auditing (z/OS 1.11)
▪ <b>MA</b> - Modify ACLs (z/OS 1.13)	

23

Hidden Treasures/New Features | Sessions 9694 & 9695

© 2011 IBM Corporation

Interactive Program Development Facility (ISPF)

IBM

## z/OS UNIX Support Enhancements. . .

- Use ISPF Edit and Browse for z/OS UNIX Files (z/OS 1.9)
  - Edit/View/Browse **"Other"** Data Set Name fields support entry of z/OS UNIX pathnames
    - z/OS UNIX Directory List displayed when pathname for directory entered in the **"Other"** Data Set Name field
  - z/OS UNIX pathname can be specified as an operand with the following edit primary and macro commands
    - COMPARE**
    - COPY**
    - CREATE**
    - MOVE**
    - REPLACE**
  - BROWSE**, **EDIT**, and **VIEW** services enhanced to support processing of z/OS UNIX files
  - FILEXFER** service enhanced to support the upload and download of z/OS UNIX regular files
  - Personal data set lists enhanced to support the saving and retrieval of z/OS UNIX pathnames

24

Hidden Treasures/New Features | Sessions 9694 & 9695

© 2011 IBM Corporation

## z/OS UNIX Support Enhancements. . .

### ■ Support for Editing ASCII Data (z/OS 1.9)

- ASCII edit automatically invoked for z/OS UNIX files tagged with CCSID 819 (US ASCII)
- ASCII edit can be selected for z/OS UNIX files not tagged by either:
  - Selecting the **Edit ASCII data** option on the Edit/View Entry panel
  - Using the z/OS UNIX Directory List Utility (option 3.17) **EA** line command
- File tagged with CCSID of 819 when saved
- ASCII edit available with the EDIT and VIEW services by using the new **ASCII** keyword parameter

## New UDLIST Command – z/OS 1.10

- Used to display a z/OS UNIX Directory List (option 3.17) from any command line
- Syntax: **UDLIST** [*personal\_list\_name* | *pathname*]
- If a personal list name is provided, a directory list will be built based on the pathname entries in the list
- Alternatively, the pathname for a directory can be specified
  - but most command lines are CAPS(ON) – cannot enter mixed-case pathnames
- If no parameter is specified with the **UDLIST** command a popup displays:

```

ISRPUDLB          Personal Data Set Lists for UDLIST          List 1 of 7
Command ==>          Scroll ==> CSR
Specify the pathname for a z/OS UNIX directory:
Name =
Or select a personal data set list as a filter for UDLIST:
Name      Description      Created      Referenced
- REF1ST  Last 30 referenced data sets      08/07/17 12:21
- OS2GMLIB OS/2 GMLIB files              08/06/10 08/06/10 14:10
- UNIXBOOK UNIX work files          07/05/11 08/02/20 13:54
- UNIXISPF UNIX Development Files/DSs      07/08/22 08/02/20 13:51
- WRKS11   WRKSP11 files           07/05/22 07/08/22 15:16
- UDLIST1  UDLIST1 files            07/05/11 07/08/22 15:16
- DEMO     ISPF Demo List (SHARE)          05/08/09 07/08/22 15:16
**End**
  
```

- Popup allows user to:
  - enter a mixed-case pathname
  - select a personal list

## Directory List Enhancements – z/OS 1.11

- z/OS UNIX commands can be entered in the command field on the z/OS UNIX Directory List panel
  - Requires option **“Enter z/OS UNIX commands in Command field”** to be selected on the directory list options panel
  - Entering a / (forward slash) in the command field displays a panel with a command field 255 characters in length
- Default line commands can be defined for different file types
  - Default line command is processed when the cursor is placed in the line command field and the ENTER key is pressed
  - IBM-supplied default line commands:
 

Directory	<b>L</b> ( <b>List</b> )
Regular file	<b>B</b> ( <b>Browse</b> )
Character special	<b>I</b>
FIFO	<b>I</b>
Symbolic link	<b>I</b>
  - User can change default line commands on the **“z/OS UNIX Directory List Default Line Commands”** panel available from the **Options** pull-down

## Using Multiple Screens

- ISPF allows up to 32 synchronously multi-tasking screens under one ISPF session
- Create new logical screens using:
  - **SPLIT [NEW]** command
    - reposition horizontal line separating 2 screens on 3270 display
    - new logical screen created when **NEW** specified
  - **START** command
    - creates new logical screen with different "initial dialog"

```
START PANEL(panel) | PGM(program) | CMD(command)
    [select_parameters]
    | ISPF_command
    | primary_option_menu_option
```
- Navigate screens using:
  - **SWAP [LIST | PREV | NEXT | screen name | n]** command
  - ISPF Task List panel (invoked using **SWAP LIST** command)

Interactive Program Development Facility (ISPF)

IBM

## ISPF Task List - Swap List Command

Screen names

"Other" screen

Current screen

ISPF Task List

Active ISPF Logical Sessions

- Start a new screen
- Start a new application
- Application Name

ID	Name	Panelid	Applid	Session Type
1	DSLST	ISRUDSL0	ISR	3270
2	EDIT	ISREDE2	ISR	3270
3	WORK	ISRWORK	ISR	3270
4-	DTEST	ISPYXD1	ISR	3270
5*	SCLM	FLNDMN	ISR	3270

Panelid and Applid

29

Hidden Treasures/New Features | Sessions 9694 & 9695

© 2011 IBM Corporation

Interactive Program Development Facility (ISPF)

IBM

## SWAPBAR – z/OS 1.10

- Simplifies the task of swapping between ISPF logical screens
- Displays at the bottom of the physical screen point-and-shoot fields associated with each logical screen for the session
  - Use the point-and-shoot field to invoke the associated logical screen
 

Tip: Customize your terminal emulator to make the action of clicking the mouse to simulate:

    - placing the cursor
    - Pressing the ENTER key
- Enabled using the new SWAPBAR system command

Syntax: **SWAPBAR [ON|OFF]**

30

Hidden Treasures/New Features | Sessions 9694 & 9695

© 2011 IBM Corporation

Interactive Program Development Facility (ISPF)

## Display System and User Id – z/OS 1.7

- New ISPF command provided which allow the system name and/or user ID to be displayed on all ISPF panels
- **SYSNAME [ON|OFF]** - Display | Remove system name
- **USERID [ON|OFF]** - Display | Remove user ID

31
Hidden Treasures/New Features | Sessions 9694 & 9695
© 2011 IBM Corporation

Interactive Program Development Facility (ISPF)

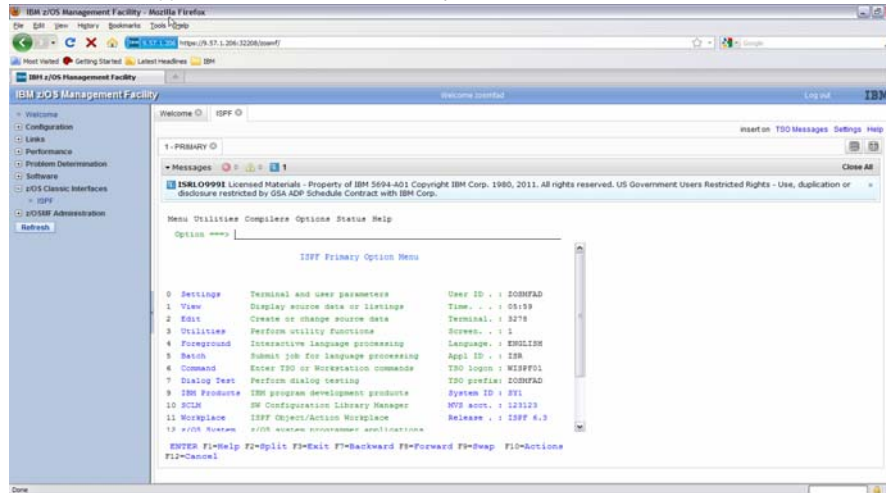
## ISPF in a Web Browser (Using z/OSMF)

- With z/OS 1.13, z/OSMF users can invoke ISPF in a web browser
- New ISPF task under z/OS Classic Interfaces category
  - Used to launch a “classic” ISPF session in the browser
  - Existing TSO logon procedure is used to define TSO/ISPF environment

32
Hidden Treasures/New Features | Sessions 9694 & 9695
© 2011 IBM Corporation

## ISPF in a Web Browser (Using z/OSMF). . .

- Panels appear similar to TN3270 ISPF layout



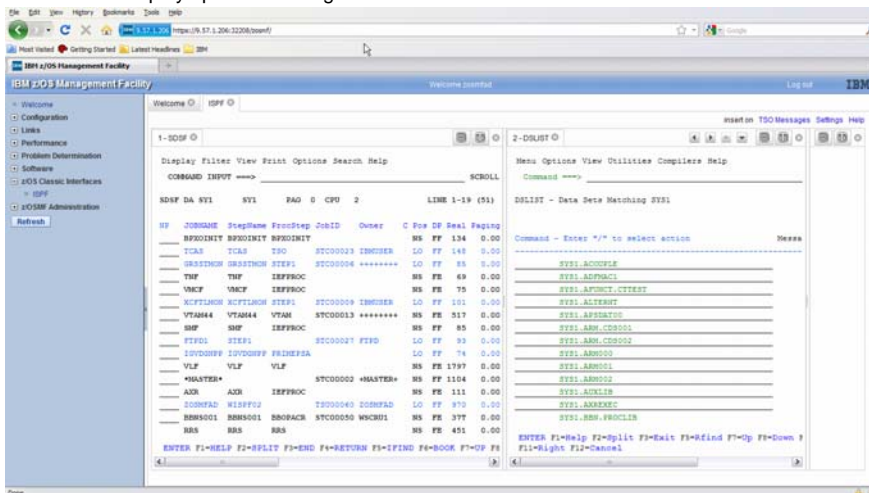
33

Hidden Treasures/New Features | Sessions 9694 &amp; 9695

© 2011 IBM Corporation

## ISPF in a Web Browser (Using z/OSMF). . .

- Can display up to 4 ISPF logical screen in the same browser tab



34

Hidden Treasures/New Features | Sessions 9694 &amp; 9695

© 2011 IBM Corporation

IBM
Interactive Program Development Facility (ISPF)

## ISPF in a Web Browser (Using z/OSMF). . .

- TSO/E messages are displayed in a popup window

35
Hidden Treasures/New Features | Sessions 9694 & 9695
© 2011 IBM Corporation

IBM
Interactive Program Development Facility (ISPF)

## ISPF Client Gateway - ISPF from the Internet

- The Gateway provides an interface for client (and z/OS UNIX) applications to run TSO and ISPF commands and services
- Runs in z/OS UNIX and is invoked upon a request for a TSO or ISPF command
  - TSO address space established
  - If an ISPF command is requested
    - ISPF data sets are allocated and an ISPF session is established
- Command requests and command output in XML format
- Gateway IVP provides a web page for entering TSO and ISPF commands
  - [/usr/lpp/ispf/bin/ISPZIVP.html](#)
  - [/usr/lpp/ispf/bin/ISPZIVP.cgi](#)
- Shipped with z/OS 1.10
  - Backfitted to z/OS 1.8 and 1.9 (APAR OA27190)

36
Hidden Treasures/New Features | Sessions 9694 & 9695
© 2011 IBM Corporation

## ISRDDN Utility

- Fullscreen display of DD allocations
- Build a member list based on a DD
- Invocation: **SELECT PGM(ISRDDN)** - DDLIST command

Current Data Set Allocations						Row 11 of 214
Command ==>						Scroll ==> CSR
Volume	Disposition	Act	DDname	Data Set Name	Actions: B E V M F C I Q	
MVS8W0	SHR, KEEP	> -	ISPILIB	PDFTDEV.VANDYKE.GIF		
MVS8W1	SHR, KEEP	> -		PDFTDEV.STG.GIF		
MVS8W1	SHR, KEEP	> -		PDFTDEV.INT.GIF		
MVS8W1	SHR, KEEP	> -		PDFTDEV.SVT.GIF		
DMTCAT	SHR, KEEP	> -	ISPLLIB	VANDYKE.LOADLIB		
MVS4W3	SHR, KEEP	> -		WDBDEV.LOAD		
MVS8W1	SHR, KEEP	> -		PDFTDEV.VANDYKE.LOAD		
MVS8W1	SHR, KEEP	> -		PDFTOOL.COMMON.LOAD		
MVS8W1	SHR, KEEP	> -		PDFTDEV.STG.LOAD		
MVS8W1	SHR, KEEP	> -		PDFTDEV.INT.LOAD		
MVS8W1	SHR, KEEP	> -		PDFTDEV.SVT.LOAD		
MVS8W1	SHR, KEEP	> -		PDFTOOL.FLMSCAN.LOAD		
S13L8R	SHR, KEEP	> -		SYS1.DFOLLIB		
S13L8R	SHR, KEEP	> -		SYS1.DGTLIB		
MVS8W0	SHR, KEEP	> -	ISPLLIB	PDFTDEV.VANDYKE.MSGGEN		
MVS8W0	SHR, KEEP	> -		PDFTOOL.COMMON.MSGS		
MVS8W0	SHR, KEEP	> -		PDFTDEV.STG.MSGGEN		
MVS8W1	SHR, KEEP	> -		PDFTDEV.INT.MSGGEN		


- Browse (B), Edit (E), View (V), Free the entire DD (F), Compress a PDS (C), Provide additional data set information (I), Display list of users of jobs using a data set (Q)

## ISRDDN - Primary Commands

- MEMBER name [string]**
  - scans allocations for a particular member
  - string** restricts the search to DDs with **string** in their name.
  - Uses CSVQUERY to locate load modules

Current Data Set Allocation					Member was found
Command ==>					Scroll ==> CSR
Message	Act	DDname	Data Set Name	Actions: B E V M F C I Q	
	> -	ISPILIB	PDFTDEV.VANDYKE.GIF		
	> -		PDFTDEV.STG.GIF		
	> -		PDFTDEV.INT.GIF		
	> -		PDFTDEV.SVT.GIF		
	> -	ISPLLIB	VANDYKE.LOADLIB		
	> -		WDBDEV.LOAD		
	> -		PDFTDEV.VANDYKE.LOAD		
	> -		PDFTOOL.COMMON.LOAD		
Member: ISPSUBS	> -		PDFTDEV.STG.LOAD		
	> -		PDFTDEV.INT.LOAD		
Member: ISPSUBS	> -		PDFTDEV.SVT.LOAD		
	> -		PDFTOOL.FLMSCAN.LOAD		
	> -		SYS1.DFOLLIB		
	> -		SYS1.DGTLIB		
	> -	ISPLLIB	PDFTDEV.VANDYKE.MSGGEN		
	> -		PDFTOOL.COMMON.MSGS		
	> -		PDFTDEV.STG.MSGGEN		
	> -		PDFTDEV.INT.MSGGEN		


- ONLY string | EXCLUDE string**
  - to show or exclude DDs with **string** in their name

Interactive Program Development Facility (ISPF)


## ISRDDN - Primary Commands...

- **SEARCH name**
  - Same as **MEMBER** but does not search DD's
- **LOAD name**
  - Explicitly loads a module
  - Uses ISPLLIB if available
  - Browses result
- **APF, LINKLIST (LI), PARMLIB, LPA (LP)**
  - toggle commands to add/remove pseudo-DD names
  - show the defined -
    - APF data sets
    - link-list data sets
    - PARMLIB data sets
    - LPA data sets

39
Hidden Treasures/New Features | Sessions 9694 & 9695
© 2011 IBM Corporation

Interactive Program Development Facility (ISPF)


## ISRDDN - Primary Commands...

- **CLIST**
  - creates a allocation CLIST in '**prefix.ISRDDN.CLIST**'
- **COUNT [string]**
  - counts the number of members in PDSs
- **DUP**
  - searches all the PDSs in the displayed list and LPA
  - displays list of duplicate names
- **ENQ**
  - Enqueues on system
- **CON**
  - Enqueue contention

40
Hidden Treasures/New Features | Sessions 9694 & 9695
© 2011 IBM Corporation

Interactive Program Development Facility (ISPF)

IBM

## ISRDDN - Browse of Control Blocks

- BROWSE STORAGE
  - SEQUENTIAL FILE
    - Allocated to DDNAME ISRDDN
    - Fixed or VB
    - Max length of 230
      - First string on line is control block name
    - Second string is locator string
    - Everything else ignored

ASCB	CVT?+C?	Addr space control blk
CVT	10.?	Comm Vector Table
TCB	CVT??	Task Control Block

- Disassembly support available with z/OS 1.9

**NOTE:** ISRDDN is now documented in the [ISPF User's Guide Volume I](#)

41

Hidden Treasures/New Features | Sessions 9694 & 9695

© 2011 IBM Corporation

Interactive Program Development Facility (ISPF)

IBM

## User Command Tables

- ISPF supports up to 3 user command tables (z/OS 1.5)
  - APPLID for User command tables are defined in the ISPF configuration table
  - Searched before Site and System command tables
- Many sites now define USER as the APPLID for a User command table
  - Speak to your systems programmer if your site does not
  - Allows users to define their own ISPF commands
  - User command table saved in a personal table data set in the ISPTLIB DD concatenation
- Creating and updating user command tables
  - Option 3.9 can be used to create a user command table
    - Requires table data set allocated to the ISPTABL DD
  - Option 3.9 cannot update a user command table if it is open to your ISPF session
    - Copy table to another member; use option 3.9 to update new member; copy updated member back
    - With z/OS 1.9, use option 3.16 (ISPF Table Utility)

42

Hidden Treasures/New Features | Sessions 9694 & 9695

© 2011 IBM Corporation

## ISRDTLCV Macro

- Shipped in SISPEXEC library
- Converts the non-displayable characters in panel output from the DTL Conversion Utility (ISPD TLC) to editable characters
- Issue **ISRDTLCV** on edit command line of generated panel